



## Memory Map Topo - Complete Map Installation Guide

---

### Objective

To install and license the Memory Map Topo product to your computer and to the SD card of your Hema Navigator. It will also be likely that you will need to purchase a larger SD card, as the extra content takes up a significant amount of storage space. We recommend that if you are going to purchase a larger card, you opt for a 16Gb card.

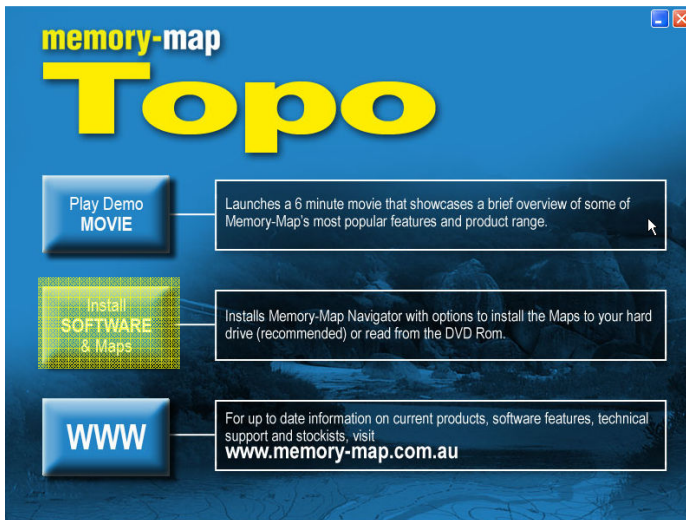
### Overview

1. Install Memory Map PC program
2. Transfer original SD card files to larger capacity SD card (recommend 16GB card, purchased separately)
3. Activate SD card license for Topo DVD product
4. Refresh map list on Navigator



## PRODUCT SUPPORT DOCUMENT

### 1. Install Memory Map program to PC



Put the DVD in your Computer disk drive. The DVD should autorun and display the install banner

If the DVD does not autorun, turn autorun ON or run the Setup program directly from the DVD

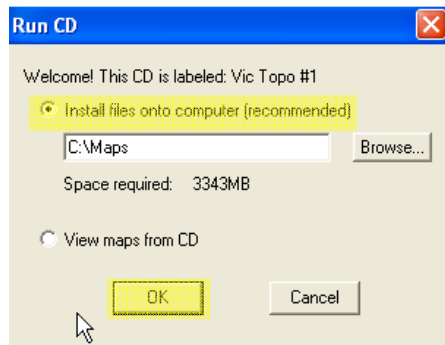
Click **Install SOFTWARE & Maps**



Click **Next** and follow the prompts to install the program on your PC.



## PRODUCT SUPPORT DOCUMENT



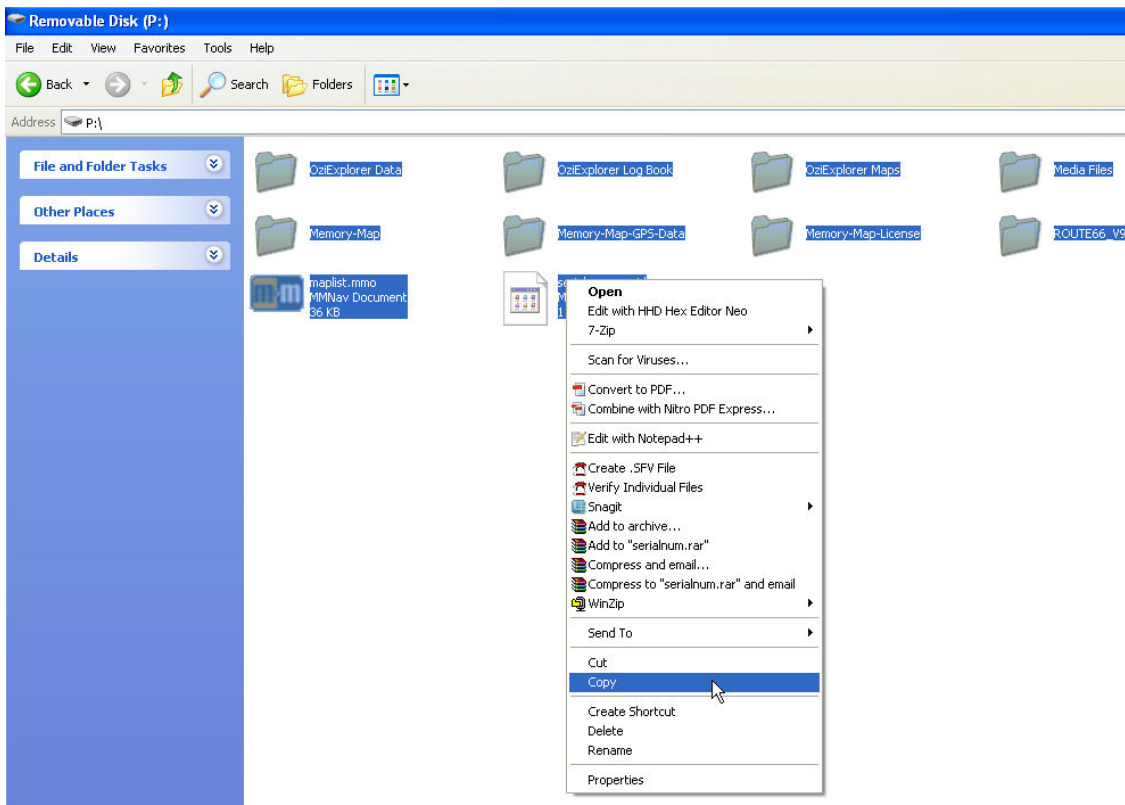
Once the program is installed you will be prompted to install the map files onto the hard drive of your PC. Accept the recommended computer install and click **OK**.



The maps will be installed to **C:\Maps** on your computer and the Memory Map icon will be placed on your desktop.



### 2. Transfer SD card files from original SD card to new SD card



Create a folder on your desktop and name it “Navigator SD Card”

Remove the SD card from the HEMA Navigator and put it in an **SDHC compatible** card reader connected to a USB port on your computer.

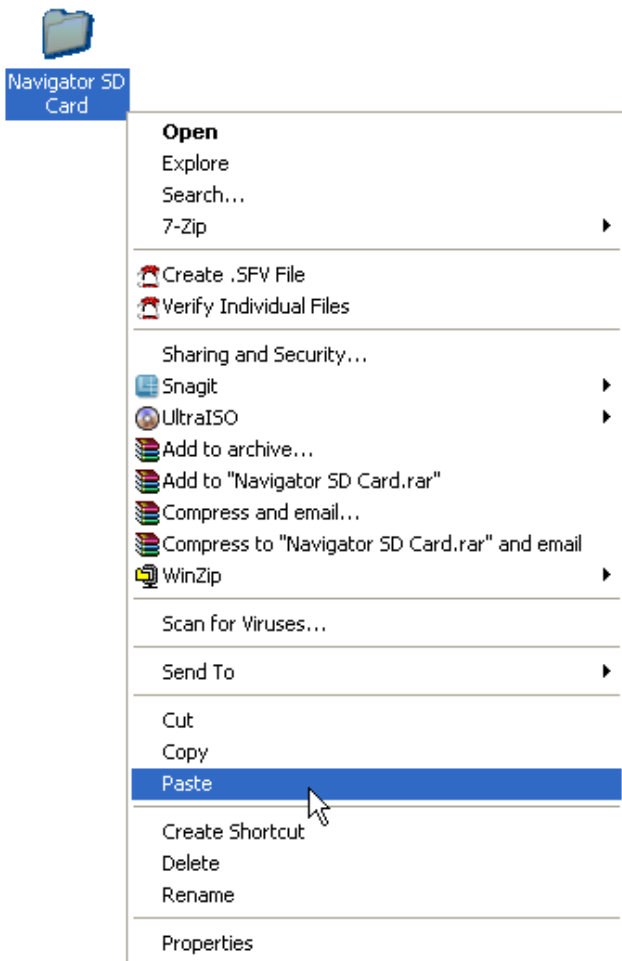
Note: An inbuilt card reader (a lot of laptops have this feature) can be used but must be SDHC compatible. View the files on the SD card.

If this option does not auto display, click on **Start > My Computer** (or **Computer** for Windows 7) then click on the drive letter that the card reader is attached to.

Press **Ctrl + A** to select all the contents of the SD card folder. Right click over the selected files and select **Copy** from the menu.



## PRODUCT SUPPORT DOCUMENT



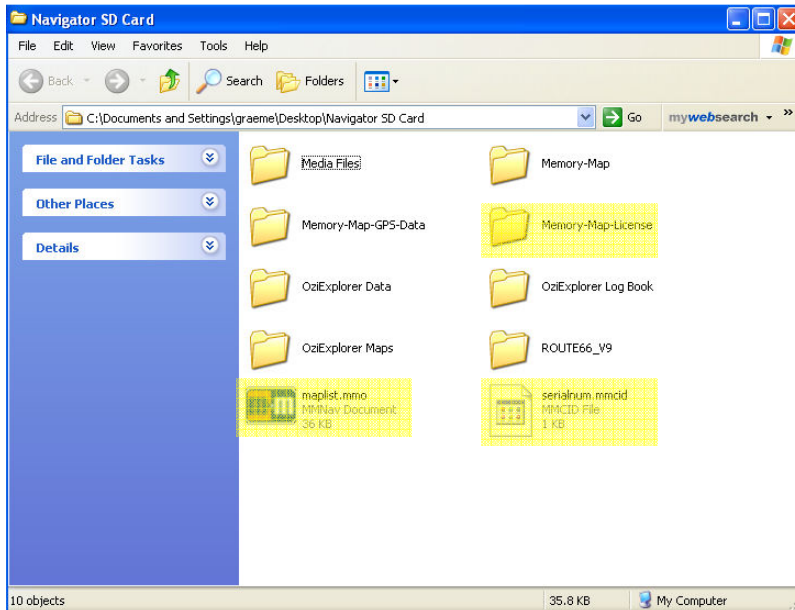
Locate the newly created **Navigator SD card** folder on the desktop. Right click on the **Navigator SD card** folder and select **Paste** from the pop-up menu.

The contents of the original SD card will be copied to the Navigator SD Card folder on your desktop.

When the copying process is complete, remove the SD card from the card reader.



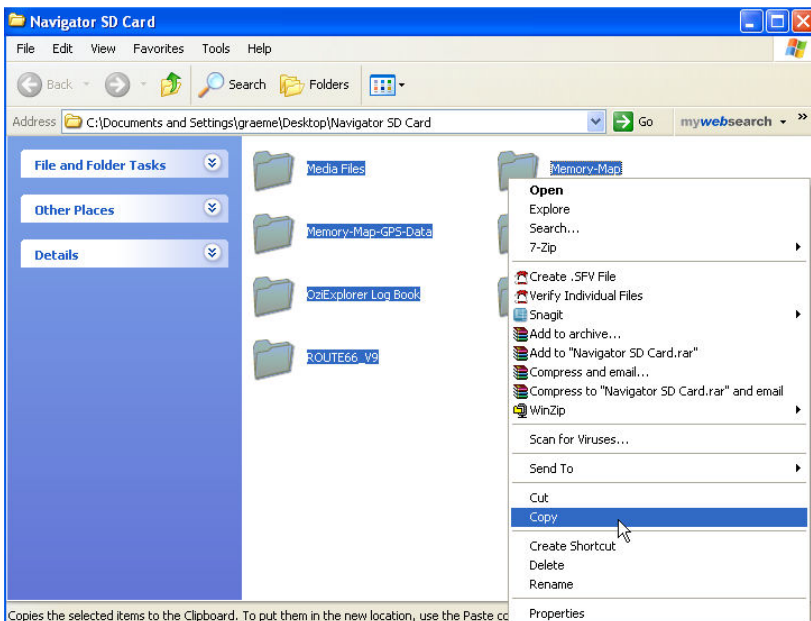
## PRODUCT SUPPORT DOCUMENT



Click on the “Navigator SD Card” folder as located on the desktop and delete the following two files and one folder.

Delete the **maplist.mmo** file, **Memory-Map-License** folder, and the **serialnum.mmcid** file

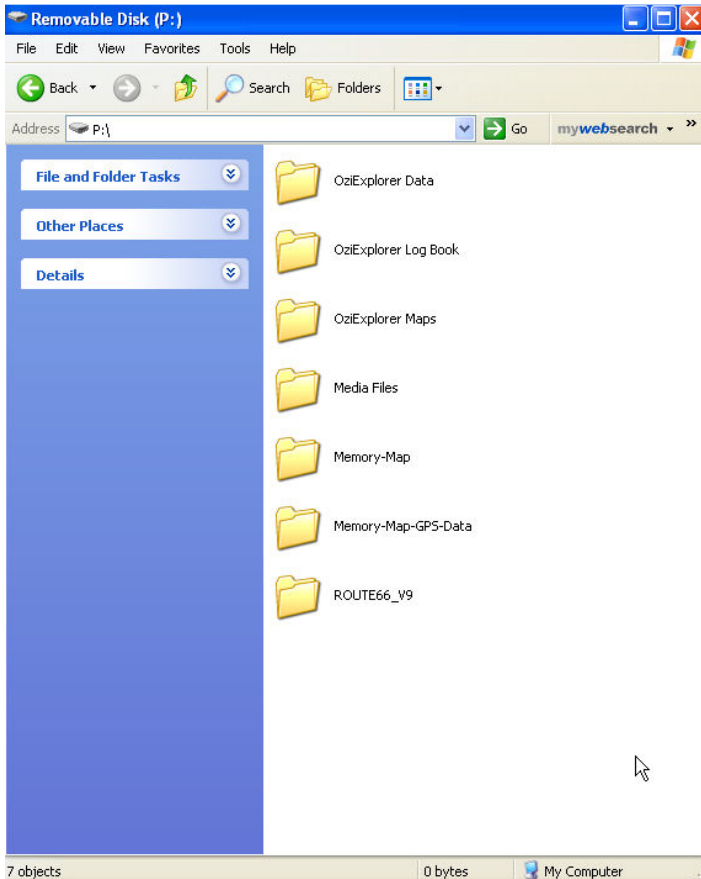
Note: **serialnum.mmcid** is a hidden file and may not be seen. To view hidden files open Windows Explorer, select **Tools > Folder Options > View and enable “Show hidden files and folders”**.



Press **Ctrl A** to Select All contents of the **Navigator SD card** folder which you created on the Desktop earlier, right click over the highlighted area and select **Copy**

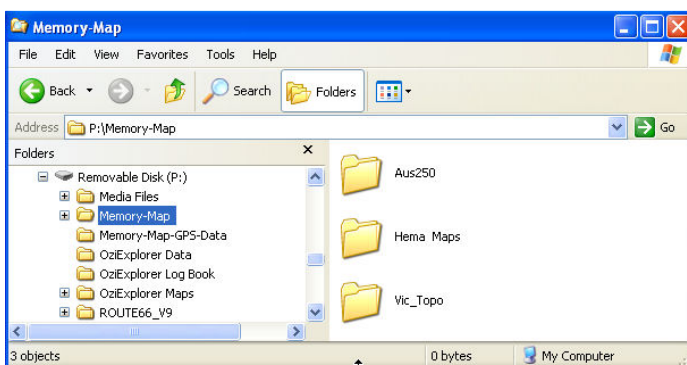


## PRODUCT SUPPORT DOCUMENT



Place the new larger capacity SD card in the card reader and locate its drive letter, Right click on the SD card drive and select Paste.

The contents of the **Navigator SD card** folder will be copied to the new SD card as shown here.



On the SD card, double click on the **Memory-Map** folder.

Create a new folder.

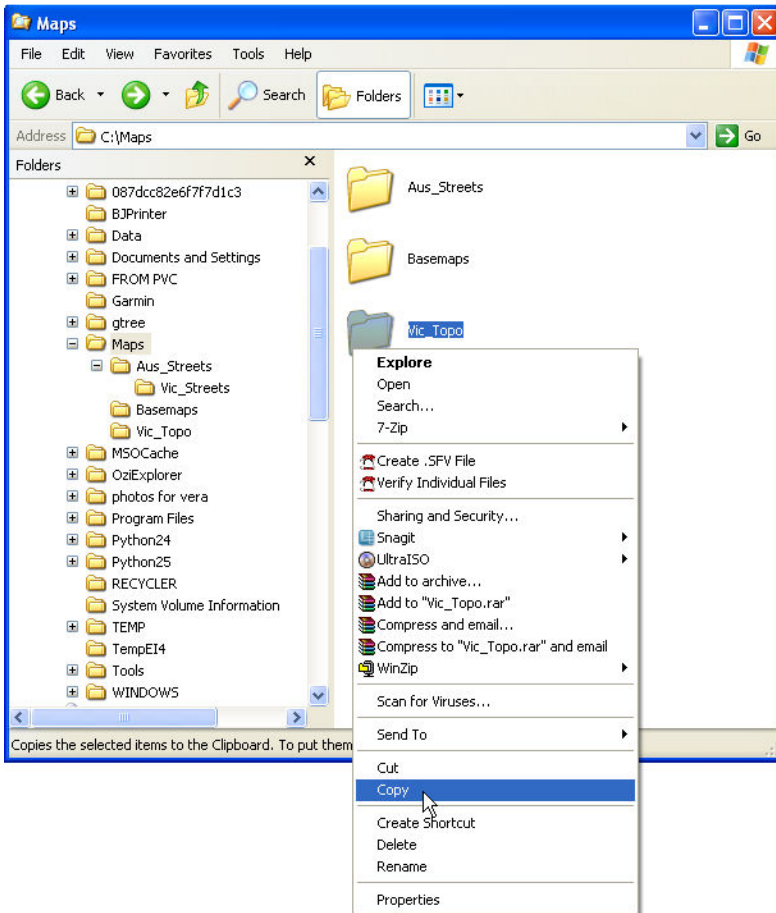
The new folder should be named according to the Memory Map product being installed.

This example is based on the VIC Topo DVD.

If installing the Victorian Topo maps, name the folder **Vic\_Topo**.



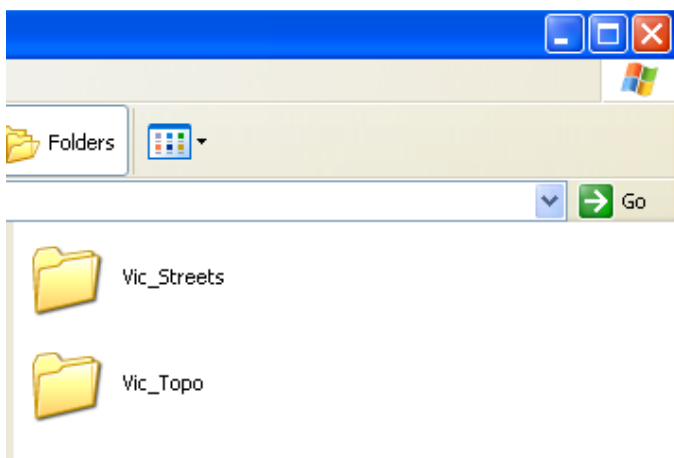
## PRODUCT SUPPORT DOCUMENT



Locate the C:\Maps folder on your PC and right click on the required Topo map folder.

i.e. for Victorian Topo right click on Vic\_Topo.

**Copy** and then **Paste** this file to the newly created Vic\_Topo folder on the SD card.



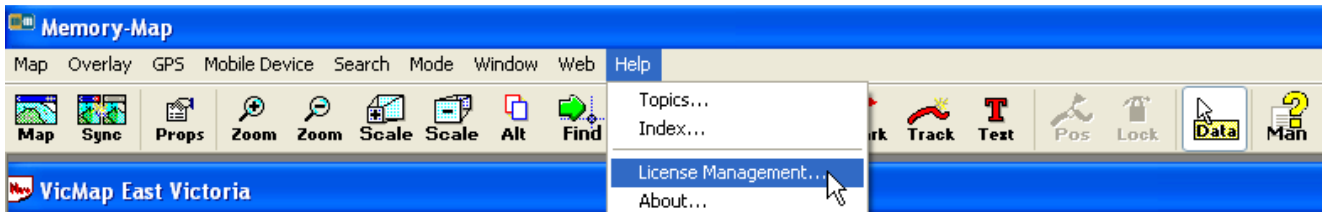
Repeat the previous step and copy the **Aus\_Streets** folder from the PC to the SD card **Vic\_Topo** folder.

The contents of the Memory-Map folder on the SD card should now be as shown:

The **Vic\_Topo** folder will be located in the **Memory-Map** folder



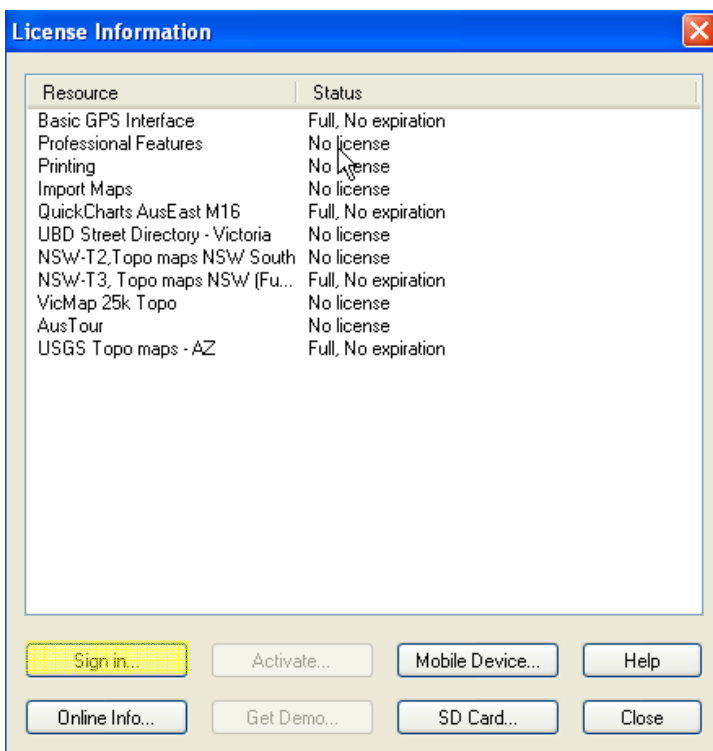
### 3. Activate Topo license on SD card



Remove the SD card from the Navigator and place in the card reader, if it's not already in the reader.

*Note: To avoid licensing errors, before doing this step, ensure that the Navigator is not connected to the PC via the USB cable.*

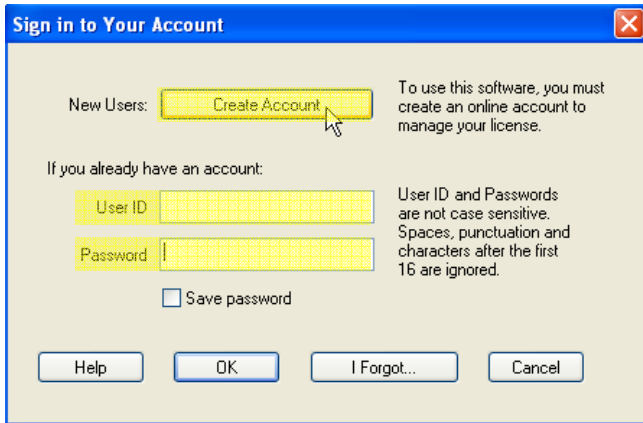
Start the Memory Map program on your computer, select **Help** then **License Management**.



Click **Sign In**



## PRODUCT SUPPORT DOCUMENT

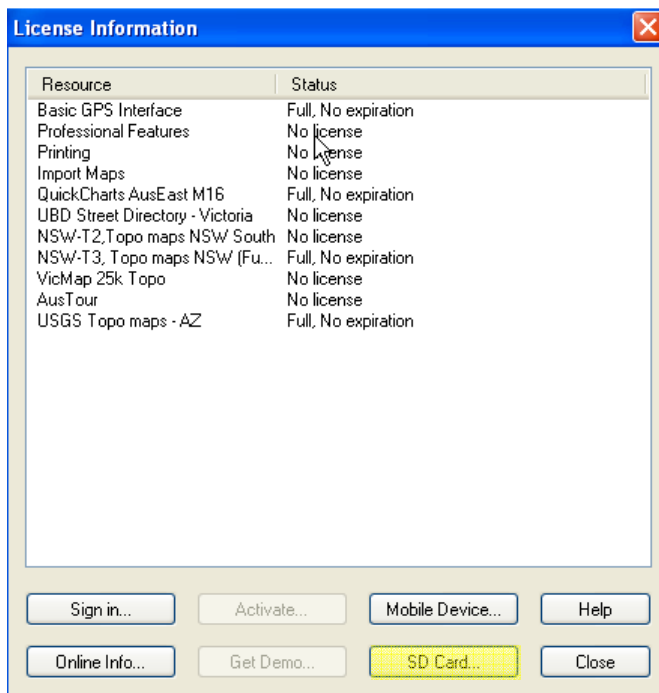


If you already have a Memory-Map account, then sign in by using your **User ID** and **Password**

If you don't have a Memory-Map account, then click the **Create Account** button and set up your Memory Map online account.

This user account will hold your two PC licenses and two device licenses as provided with each Topo product.

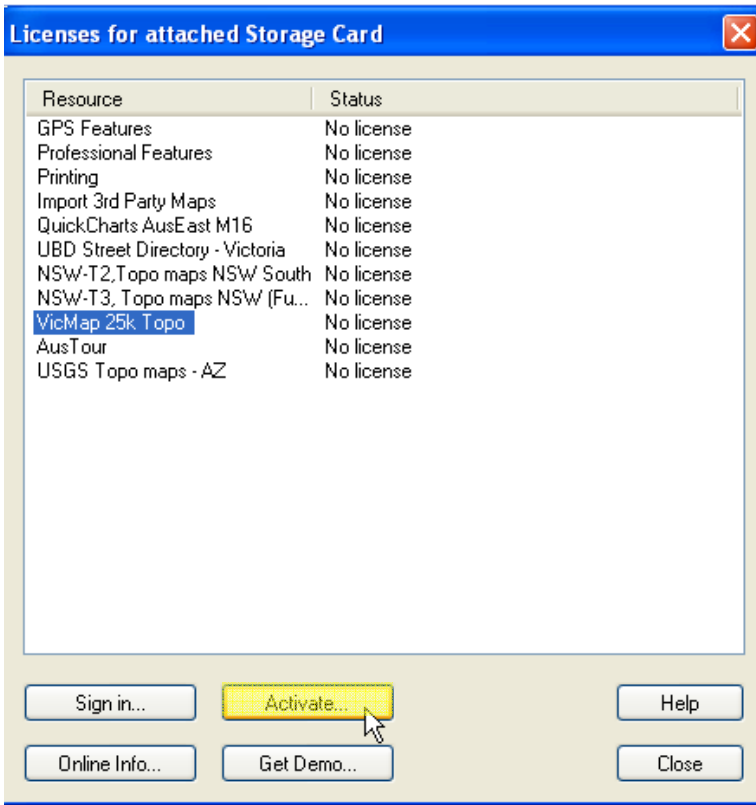
This account can also be used to log in to the Memory-map website, where you can view licenses which you currently own, etc.



Once you have created your Memory Map account, return to the License Information window and click the **SD Card** button.



## PRODUCT SUPPORT DOCUMENT



Highlight the product you wish to activate the license for

i.e. Single click on VicMap25k Topo.

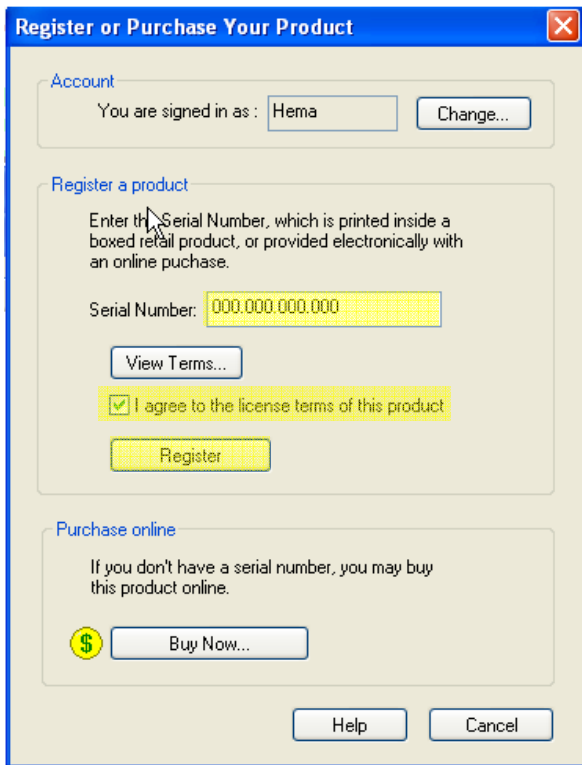
Click the **Activate** button



Click the **Register a Serial Number** button



## PRODUCT SUPPORT DOCUMENT



Enter the serial number as displayed on the sticker on the inside of the DVD case. Tick the “**I agree to license terms of this product**” checkbox then click the **Register** button

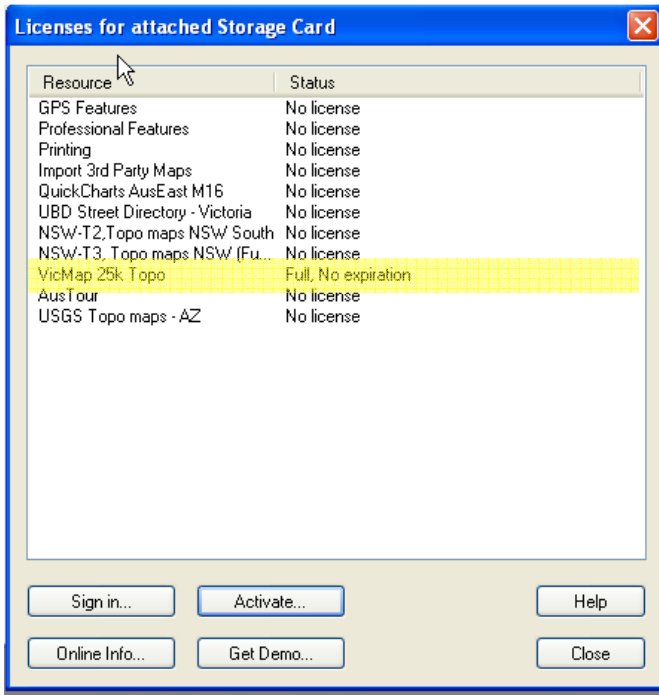


Your activation details will be displayed containing the number of Activation rights in your account and the number of Rights needed to complete this request.

Click the **Activate** button



## PRODUCT SUPPORT DOCUMENT



The Status of the activated product will be displayed.

A status of **Full, No expiration** indicates the this product was successfully activated.

Remove the SD card from the card reader and put it back in the Navigator.



## PRODUCT SUPPORT DOCUMENT

### 4. Refresh the Map list on the Navigator and confirm that the new maps load and display



Start **Memory Map** on the Navigator.



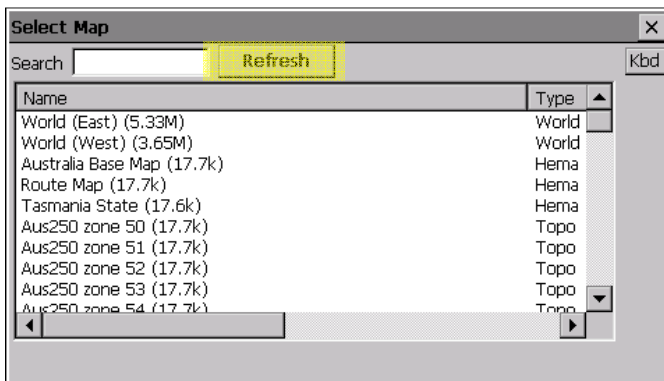
Select the Planning Mode by tapping the **Mode** button



Click the **Tools** button



## PRODUCT SUPPORT DOCUMENT



Tap **Map** and then tap the **Refresh** button



The new Topo maps will be added to the map list and displayed as Topo and Street maps according to the Topo product that has been installed.

A map can be loaded by using the scroll bar to locate the map and tapping on that map. Maps can also be displayed by tapping the + or – buttons to Zoom in to the required area. Memory Map will automatically change maps as you Zoom In.

**Note:** If the map is pixelated when loaded or a licensing error message is displayed, the SD card has not been successfully licensed and will require licensing as detailed earlier in this document



## Troubleshooting

---

### Q. WHY ARE THE MAPS DISPLAYING WITH A VERY PIXELATED IMAGE?

A. The map is still encrypted and is not licensed to the SD card or device. It will be necessary redo the following steps:

1. Delete the **maplist.mmo file**, **Memory-Map-License** folder, and the **serialnum.mmcid** file from the SD card using your PC SD card reader
2. Insert the SD card in the Navigator and run Memory-Map
3. Put the card back in the card reader and re license the SD card as shown in this document

*Note: There are only two license codes for licensing the Topo product to your SD card.*

---

### Q. A LICENSE MANAGER ERROR IS STATING THAT THE "LICENSE FOR MY TOPO RESOURCE HAS NOT BEEN ACTIVATED" AND THA "ENCRYPTED CONTENT IS NOT AVAILABLE"

A. The map is still encrypted and is not licensed to the SD card or device. Follow steps 1 to 3 as shown above.

### Q. CAN I COPY THE TOPO MAPS TO ANOTHER SD CARD?

A. Yes, but it will be necessary to activate the new card using your second license or to migrate the license from the old card to the new card. This is accessed from the Memory Map PC program. Click Help > License Management > Sign In > Online Info > Migrate License

### Q. I HAVE USED ALL OF MY ACTIVATION LICENSES BUT STILL CANNOT VIEW THE MAPS. CAN I ACCESS ANY MORE CODES?

A. Contact Memory Map Support from the Contact section of the Memory Map web site:

<http://www.memory-map.com.au/contact-us-1.html>

Or contact Hema Navigator Support on 07 3340 0000