



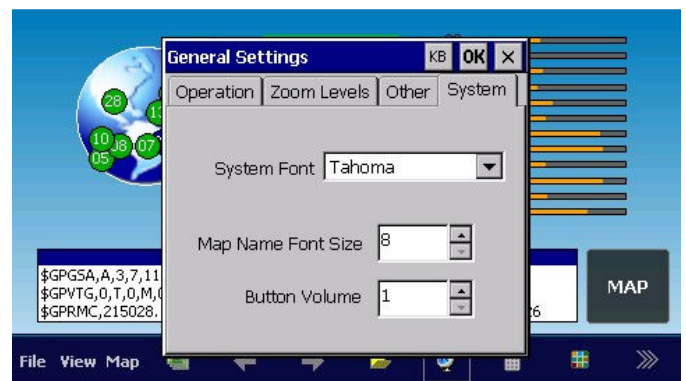
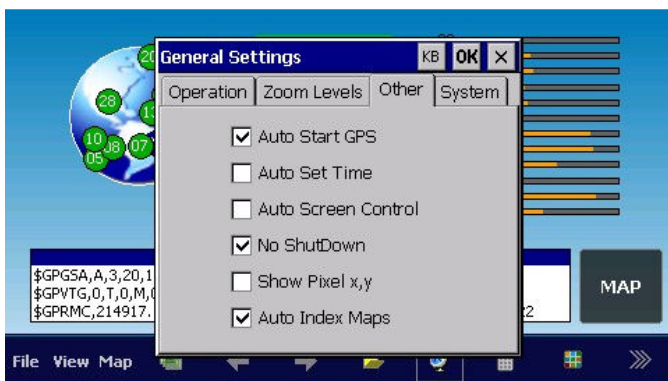
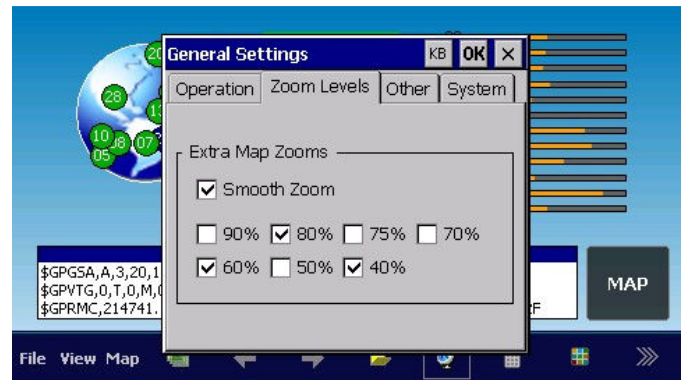
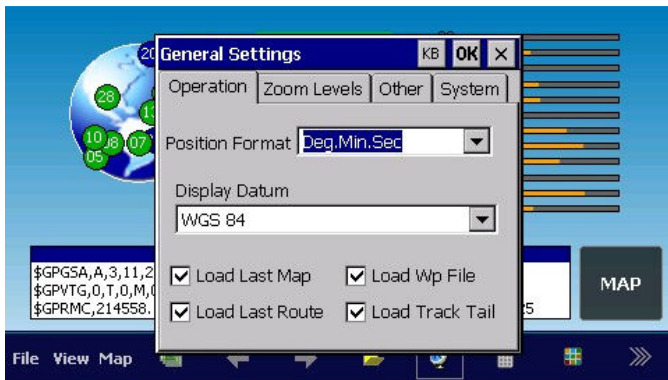
Default Configuration of OziExplorerCE on Your Navigator

This section shows all configuration options which are set in your Navigator by default. If you have changed some options, but are unsure what you have changed, you can refer to these images to see what the settings were *before* they were modified.

These are shown in the order that they are found on the **File / Configuration** menu, left to right and down the page.

These settings are common on both models of the HEMA Navigator (HN1 and HN5). The only differences are the folder name used for the internal memory of the unit. Any differences will be shown with a warning icon for the specific model.

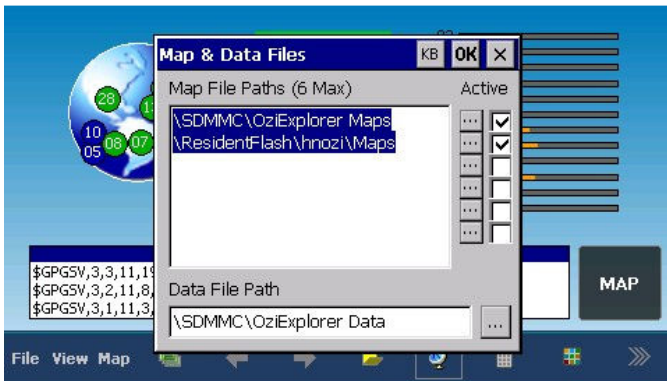
File / Configuration / General Settings menu




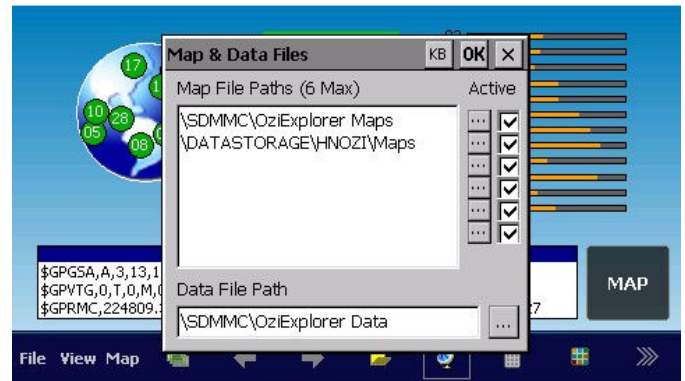



PRODUCT SUPPORT DOCUMENT

File / Configuration / Map & Data Files menu

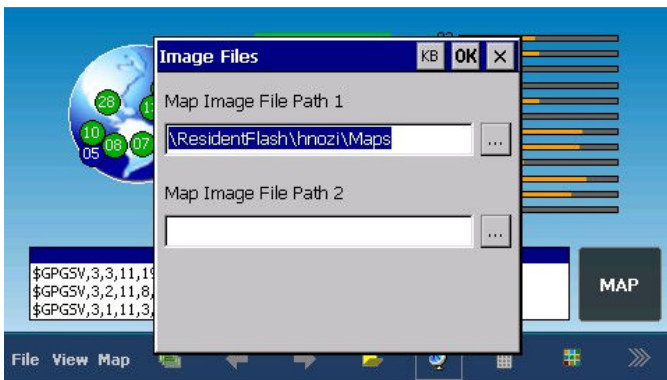



 This is the setup on an **HN5** Navigator – it uses the **ResidentFlash** folder for internal memory

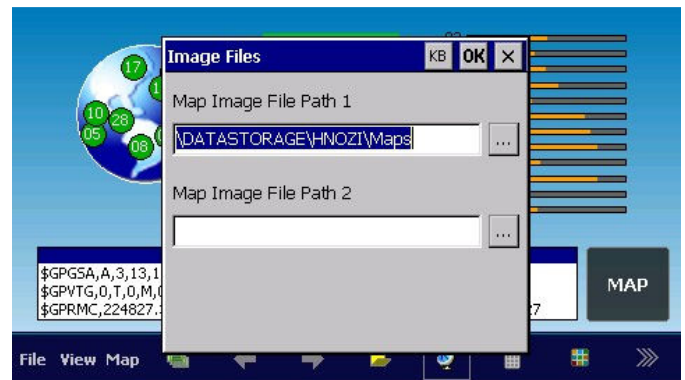



 This is the setup on an **HN1** Navigator – it uses the **DataStorage** folder for internal memory

File / Configuration / Map Image Files menu



 This is the setup on an **HN5** Navigator – it uses the **ResidentFlash** folder for internal memory

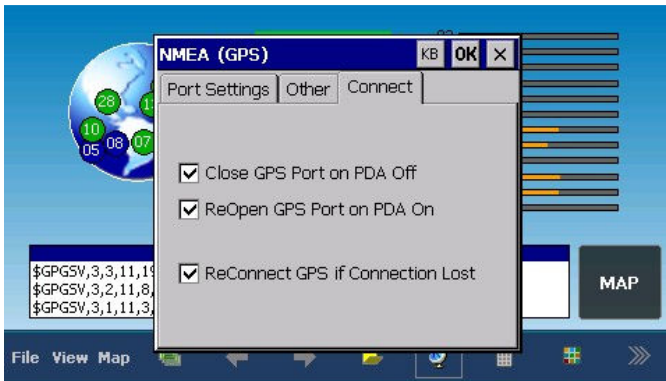
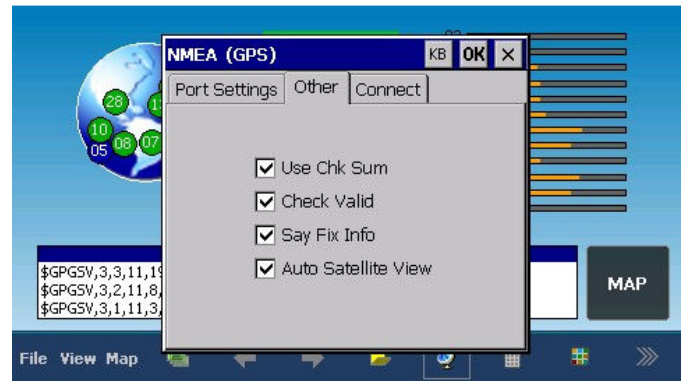
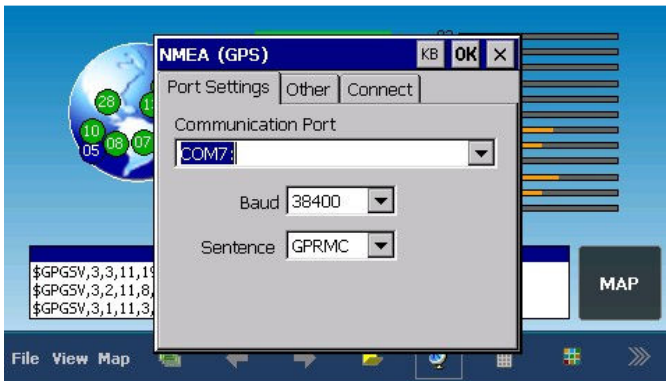


 This is the setup on an **HN1** Navigator – it uses the **DataStorage** folder for internal memory



PRODUCT SUPPORT DOCUMENT

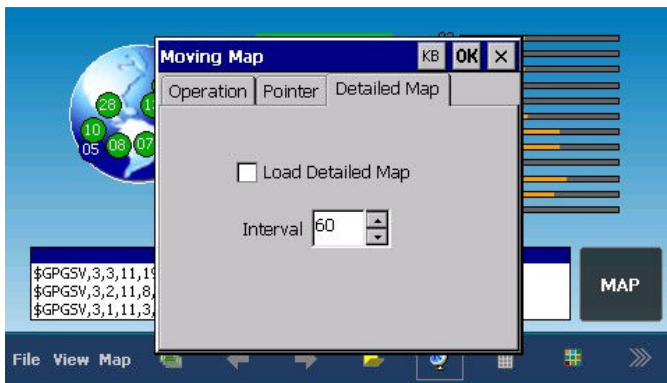
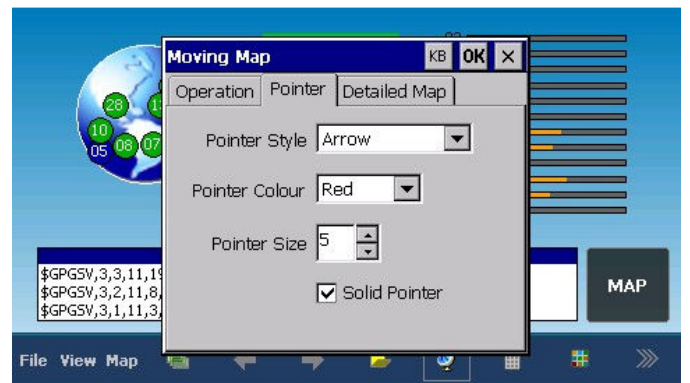
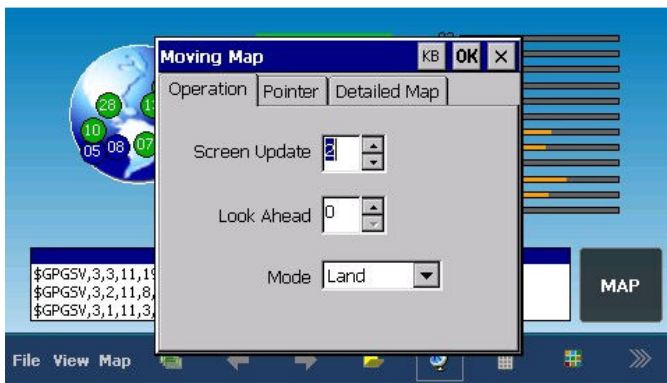
File / Configuration / NMEA (GPS) menu





PRODUCT SUPPORT DOCUMENT

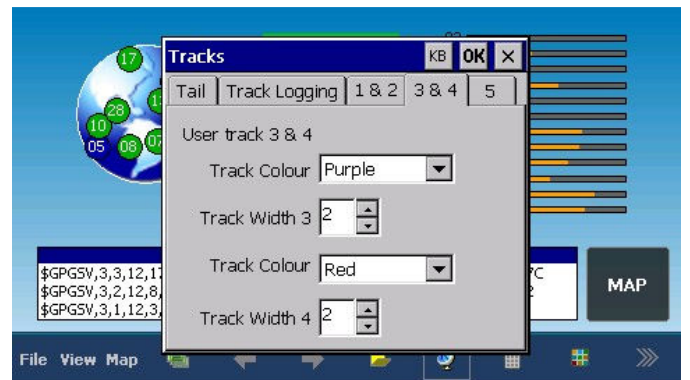
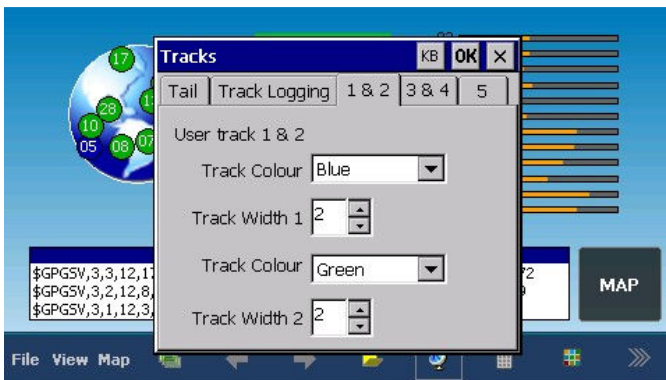
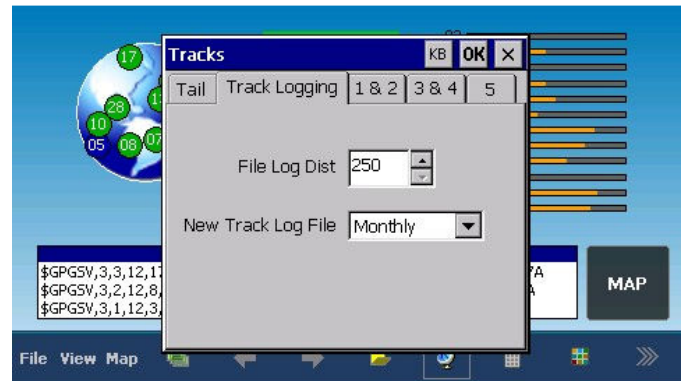
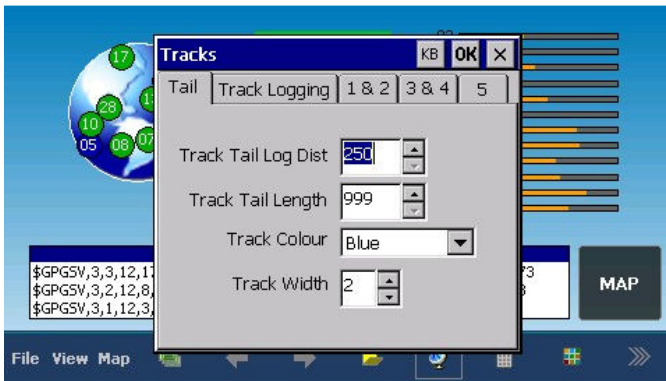
File / Configuration / Moving Map menu





PRODUCT SUPPORT DOCUMENT

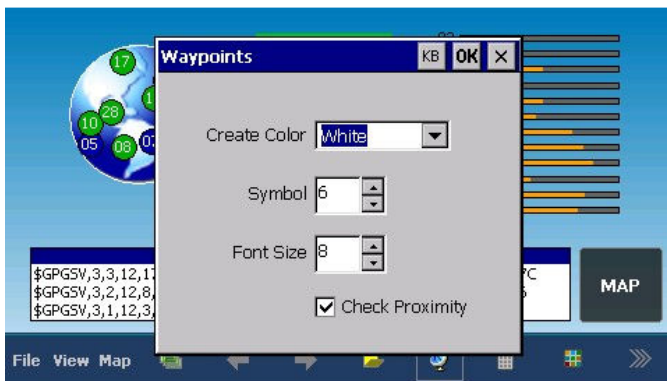
File / Configuration / Tracks menu



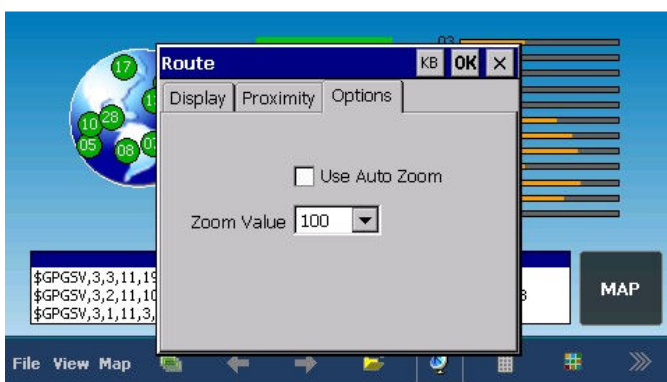
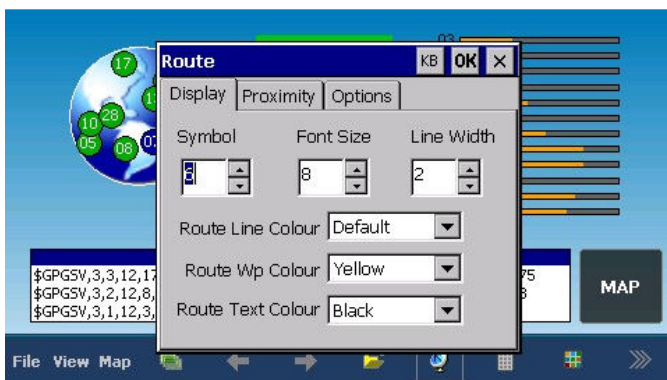


PRODUCT SUPPORT DOCUMENT

File / Configuration / Waypoints menu



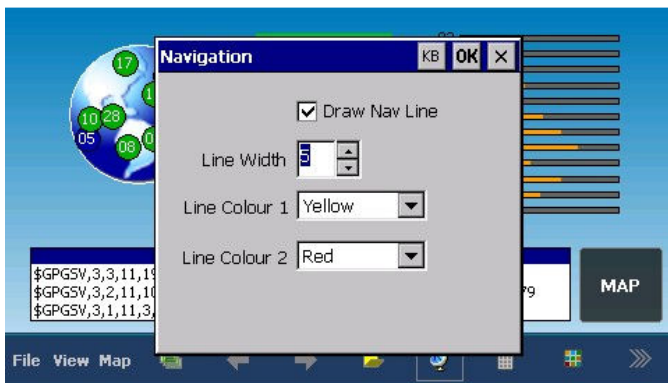
File / Configuration / Route menu



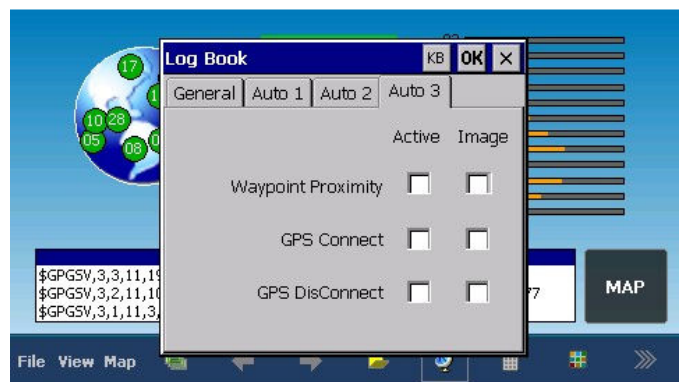
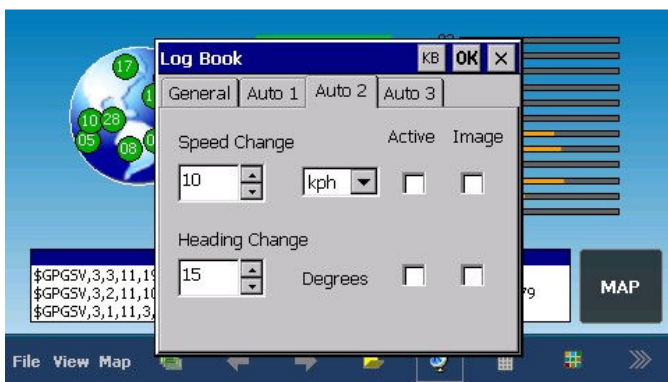
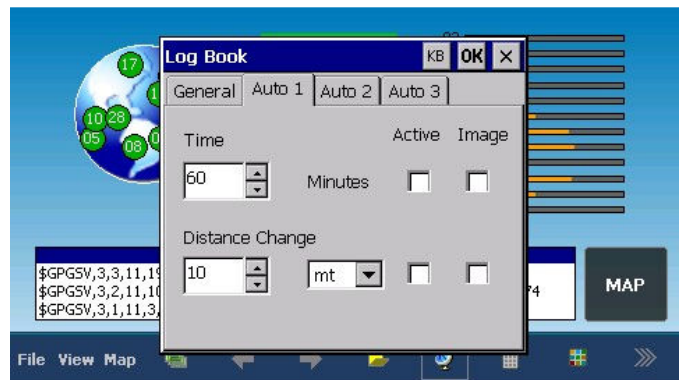
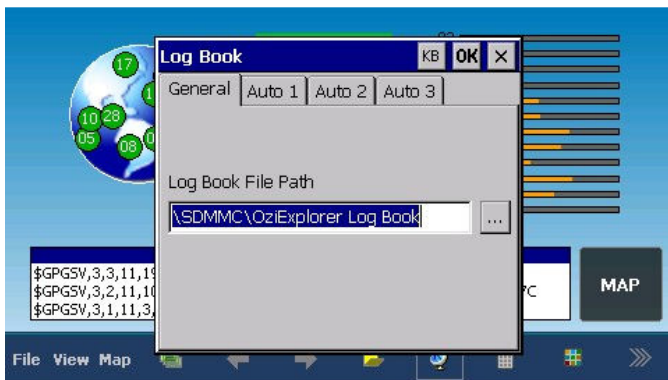


PRODUCT SUPPORT DOCUMENT

File / Configuration / Navigation menu



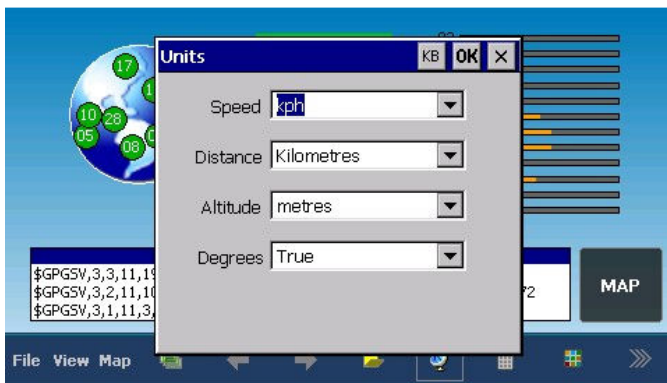
File / Configuration / Log Book menu





PRODUCT SUPPORT DOCUMENT

File / Configuration / Units menu



File / Configuration / Speed Monitor menu

