

# ROUTE 66 Maps

Maps and navigation. Anytime. Anywhere.



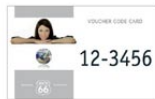
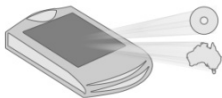
Quick Start Guide

[WWW.66.COM](http://WWW.66.COM)



I'M ON MY WAY

## First time use



- 1** Your navigation device comes with the software and the maps pre-installed.

So, you don't need a computer to install any software or map to prepare your navigation device for the first time use!



- 3** Your software is pre-activated! There is no need to activate it before the first use.

- 2** The voucher code card is only needed in case you need to reinstall the software or the map.



- 4** Please charge the battery overnight before using the device for the first time, or use the device while charging the battery with the supplied car charger.

Use the supplied car charger or connect the device to the USB port of your computer for charging.

## First time use

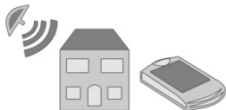


- 5 The navigation device only works when it can receive a clear signal from the GPS satellite network. Use it outdoors or on the dashboard of your car.



- 6 The first time it can take up to 15 minutes to receive all information from the satellite network.

The next time you start the device, the waiting time will decrease dramatically, from a few minutes to a few seconds!

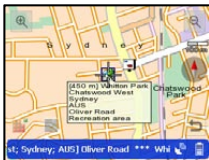


- 7 Your device can't receive a powerful satellite signal when you are inside your house or in an office building.



- 8 Spend a few minutes to read the rest of this quick start guide. It will help you get the most out of your new navigation product.

# Getting familiar with ROUTE 66 Maps



- 1 Use the Zoom in and Zoom out buttons.  
Zoom in to street level to see all street names and points-of-interest.  
Zoom out to the world map to see all countries and capital cities.

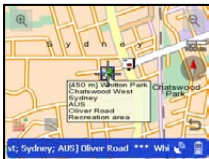
Show shortcuts  
Search  
Extras  
Show



Routes  
Tools  
Help  
Exit

- 2 Use the Options menu as your command center:
- show shortcuts
  - search places and start navigating
  - use extra content
  - plan routes
  - browse maps
  - customise your application

## Getting familiar with ROUTE 66 Maps



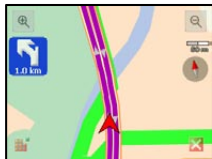
- 3 Tap map to start moving around the map. Your position is indicated by a +.



Use the Context menu to navigate to the selected place.



- 4 Use the 'go back' button to return from map browsing to the navigation screen or to the previous screen.



- 5 With a flexible navigation bar you can show or hide travel information.

# Search your destination



- 1 Search:
- Free text
  - Addresses
  - Favourites
  - History
  - Points-of-interest
  - Latitude / Longitude

- 2 Use the virtual keyboard to write your keywords:
- Use letters or symbols.
  - Use Backspace to delete characters.
  - Select Search to start your search.

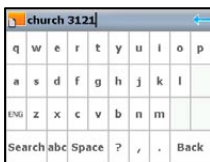


- 3 Use filters to find the item you need from a long list.

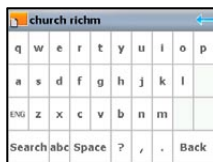


- 4 Drive to your destination.  
Walk to your destination.

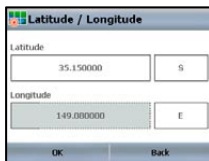
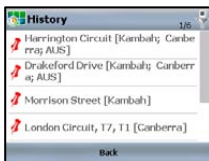
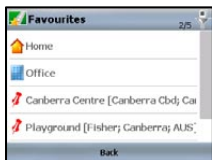
## Search your destination



- 5 You don't need to add 'street', 'road' or other generic address parts, just enter 'Church Richmond' or 'Church 3121' to find Church Street in Richmond, Victoria.



- 6 You don't need to enter full addresses, 'Church Richm' also leads to a list of results that includes Church Street in Richmond.



- 7 Find ANY place on the current map. Even ANY place worldwide. Fast and easy. Look for: addresses, points-of-interest, favourites, latitude / longitude, history records.

# Do more with ROUTE 66 Maps

Now you know how to find a destination and start to navigate.  
But... there is much more you can do with ROUTE 66 Maps.



- 1 Set a favourite address as your Home or Office destination.



- 2 Switch from 2D perspective to 3D perspective.

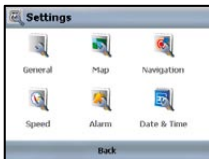


- 3 Use different combinations of colours to enhance the look of the application.



- 4 Use bright colours for day navigation and dim colours for night travels.

# Do more with ROUTE 66 Maps



- 5
- Choose your favourite language.
  - Increase / decrease map details.
  - And the list goes on...



- 6
- Choose travel warnings.
  - Avoid crowded trip sections.



- 7
- Plan your holiday journeys and include all great places you want to visit along the way.
  - View trips on map.
  - Simulate trips before actually leaving your home.

# ROUTE 66 Extras



- 1 Open the Extras section (Options > Extras) to view the content and services already available on your device.

- 2 Select a category (for example, Voices) and view the item you are currently using (for example, English (Australia) – Male).



- 3 In order to add content to your device, use the ROUTE 66 Sync home application on your computer (see page 12+13 of this guide).

- 4 You must download and install on your PC, free-of-charge, the Microsoft ActiveSync application. Go to the webpage:

<http://www.microsoft.com/windowsmobile/en-us/help/synchronize/ActiveSync-download.aspx>

After that, connect your navigation device to your PC via a USB cable.

# ROUTE 66 Extras



## Maps:

- Always up-to-date
- Use the latest maps
- Know about the latest changes in roads and points-of-interest
- Enjoy the latest 3D technology and hundreds of interesting landmarks



## Navigation:

- Always on time
- Spoken instructions and visual guidance
- Drive and walk
- Walk
- Advanced guidance



## Voice prompts:

- Listen to vocal instructions in your favourite language
- Wide choice of male and female voices
- More languages than ever



## Safety Cameras:

- Avoid speed tickets
- Save money and drive in a more relaxed way



## Colour schemes:

- Personalise. Customise. Fine-tune
- Wide variety of colour schemes
- Fit the colours of the map to your taste or even to your car's dashboard



## Lonely Planet travel guides:

- Everything you need to know about your destination

# ROUTE 66 Sync

Use the free ROUTE 66 Sync home software to easily manage, customise and keep all the content of your navigation device up-to-date.



- 1 Install the ROUTE 66 Sync home application.

2

- Connect your navigation device to your PC via a USB cable.
- Make sure ActiveSync runs correctly.
- Open the navigation software on your device.



- 3
- Start the ROUTE 66 Sync home application from the Programs list, or click on the Sync icon on your desktop.
  - Make sure your computer is connected to the internet.

4

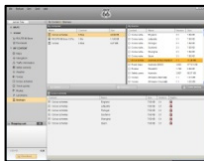
The home application is loaded. Start with the online shop. Or check the content you already have on your device or on your PC.



# ROUTE 66 Sync



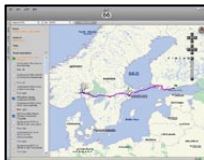
- 5
- Shop
  - Backup
  - Restore
  - Maps and routes
  - 3D buildings and 3D landmarks
  - Recommendations
  - Account creation
  - Favourites
  - History



- 6
- Backup your content:
- Create on your PC useful safety backups of all extra content you bought and downloaded on your navigation device.
  - Copy back on your device the content you accidentally lost or deleted.



- 7
- Download Center:
- Start, interrupt and resume your downloads.
  - View the items downloaded on your PC.
  - View the items copied on your navigation device.



- 8
- Calculate routes:
- Enter departure and destination.
  - Select Calculate route.
  - The entire route is displayed on the map.
  - The route details are displayed in the left area.

## ***Something wrong?***



- All Tempo products are backed by our 12 month Replacement Warranty, unless otherwise indicated on the product.
- If you believe your product is not performing as expected, please call our freecall warranty claim number: 1300 88 6649.
- Our technicians can help you through the correct usage of your product and facilitate repair or exchange if the product is deemed to be faulty.

## Something wrong?



## Q&A

- Access the Frequently Asked Questions section on the Support page of the ROUTE 66 website [www.66.com](http://www.66.com)
- Select **All-in-one navigation**.
- Pick a question and an answer

***Thank You!***