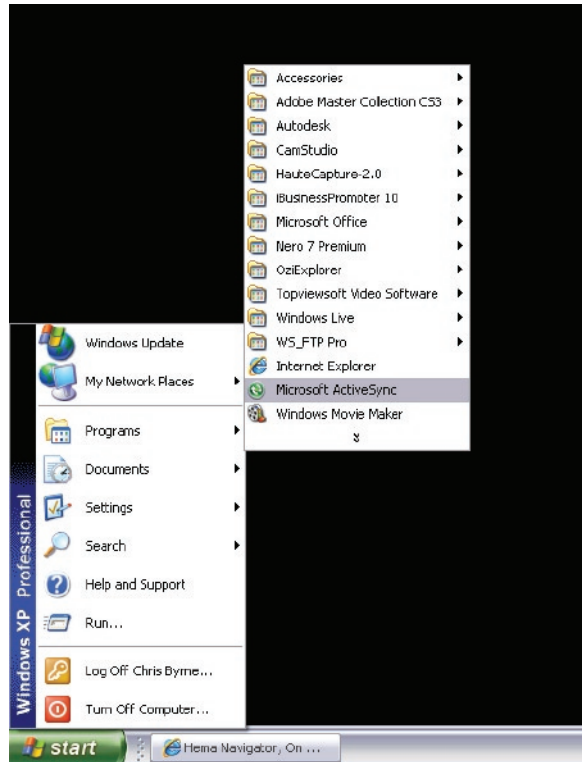


Hema Navigator connecting to Active Sync, synchronising Map data, Safety Cameras & triggering Safety cameras.

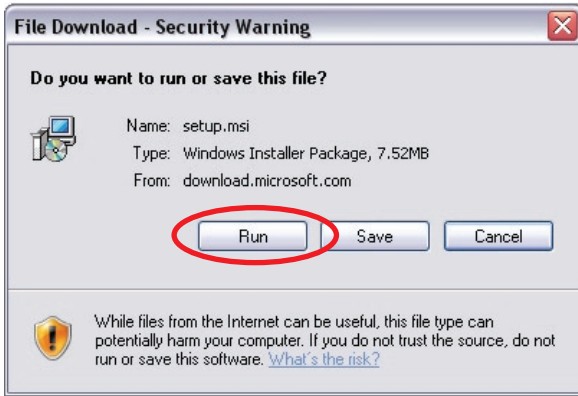
1. Please check to make sure you have ActiveSync installed, if you have already installed ActiveSync skip to step 4. **Make sure you are on a computer with the internet connected.**



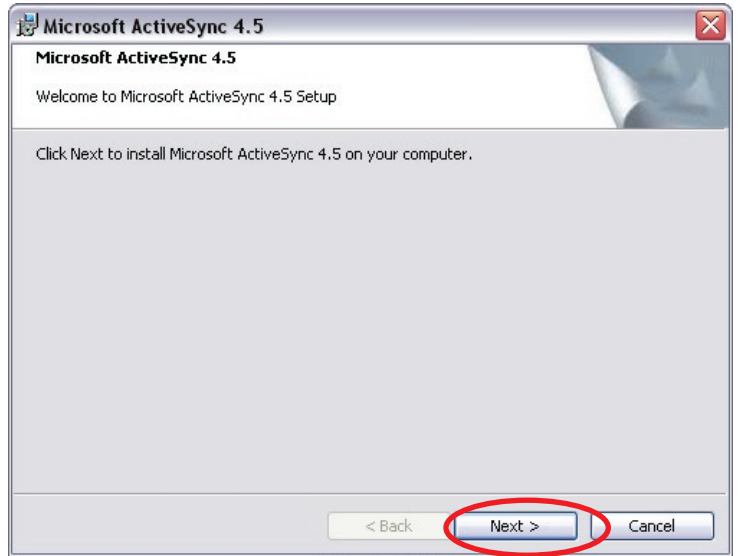
2. Please download ActiveSync either from our website or directly from Microsoft. Here is the direct link for the Hema Navigators software section. http://www.hemnavigator.com.au/support_software_updates.html

A screenshot of the Hema Navigator website. The header features the HEMA logo and the text 'ON & OFF ROAD GPS NAVIGATION'. A navigation bar contains links for Home, Products, Dealers, Support (circled in red with a '1'), and Contact. Below the navigation bar, a secondary menu includes 'Software / Updates' (circled in red with a '2'). The main content area is titled 'SOFTWARE / UPDATES' and contains a table with columns for 'Software / Update', 'Description', and 'File Size'. Three software updates are listed: 'ActiveSync - Windows XP' (circled in red with a '3'), 'ActiveSync - Windows Vista 32bit', and 'ActiveSync - Windows Vista 64bit'. A fourth entry, 'OziExplorer Demo - PC Version', is also visible. The website footer includes the HEMA logo and links for Links, Site Map, About us, Privacy, Disclaimer, and Contact.

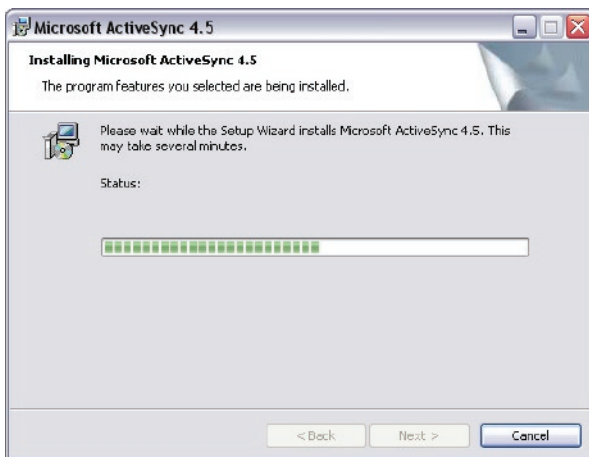
2. Select Run



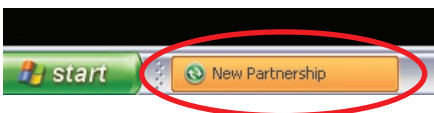
3. Install Microsoft ActiveSync as you would with most common programs.



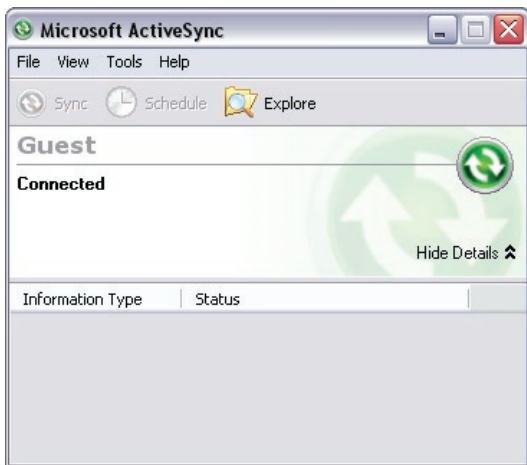
4. Once installed plug your Hema Navigator into your computer using the USB cable provided



5. If the computer detects you have the Hema Navigator connected it should bring up a screen that asks to Set Up a Partnership. Select No and press Next.



6. It should look like the illustration below if the Navigator has been successfully connected.



Only If the device is not connecting try resetting your computer as well as the Hema Navigator as illustrated.



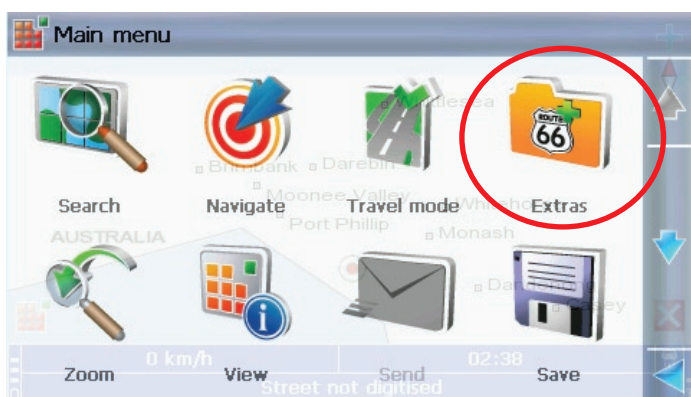
7. Go into your street navigation program Route66



8. Access the main menu



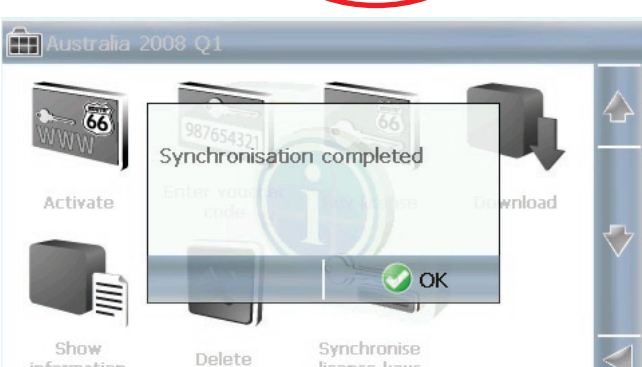
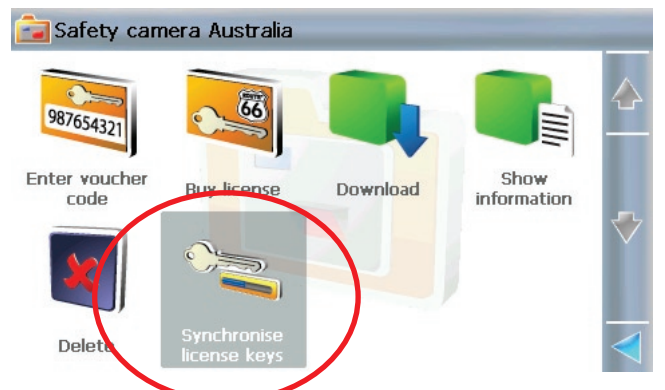
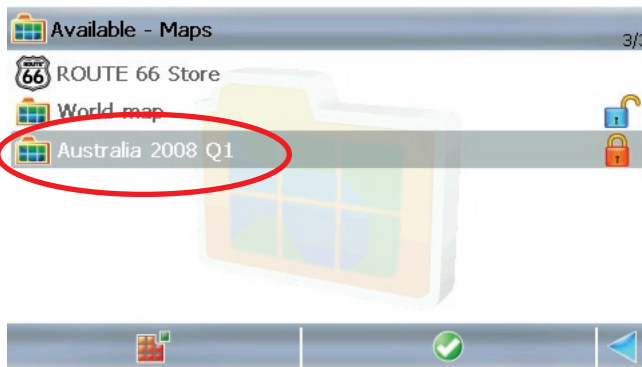
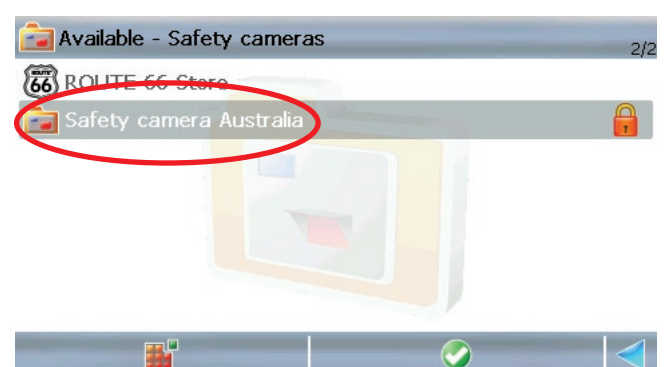
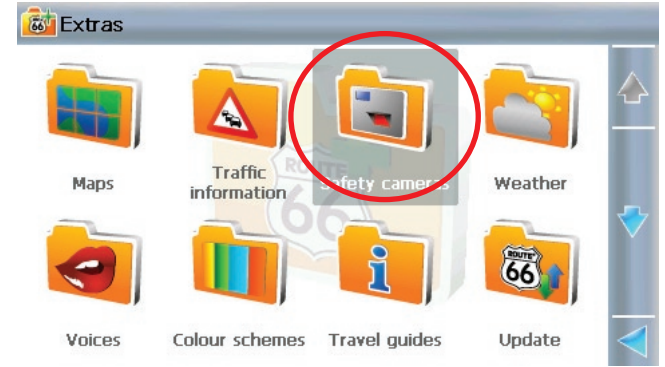
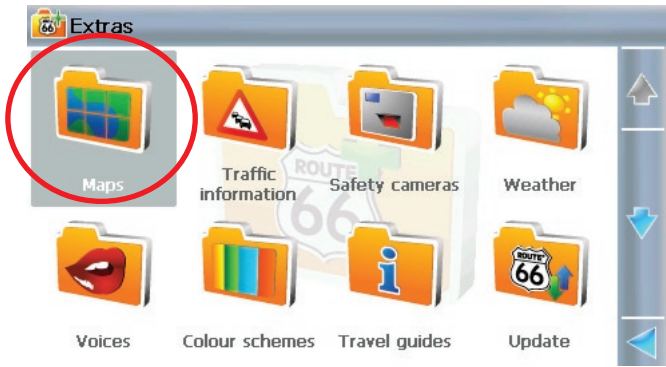
8. Select Extras



9. From the Extras menu you can now access all the online features, you can download / purchase extra maps, voices, updates etc. In this instance this guide will show you how to synchronise your maps and safety cameras if in the chance they are locked.

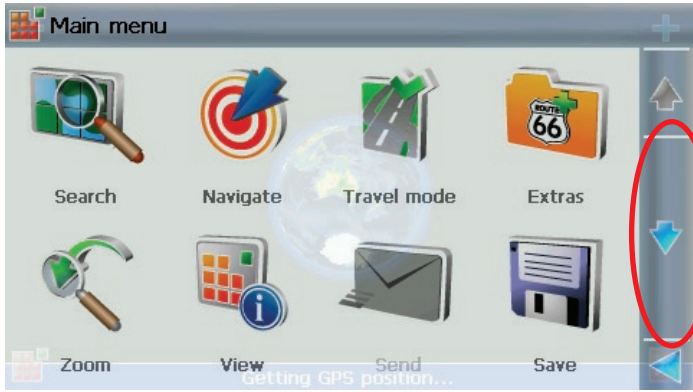
SYNCHRONISING MAP LICENCE KEYS

SYNCHRONISING SAFETY CAMERA LICENCE KEYS



Trigering Safety cameras once they have been unlocked.

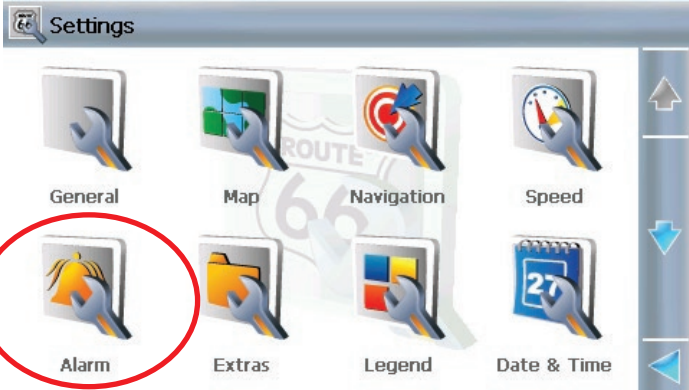
10. Go back to the main menu



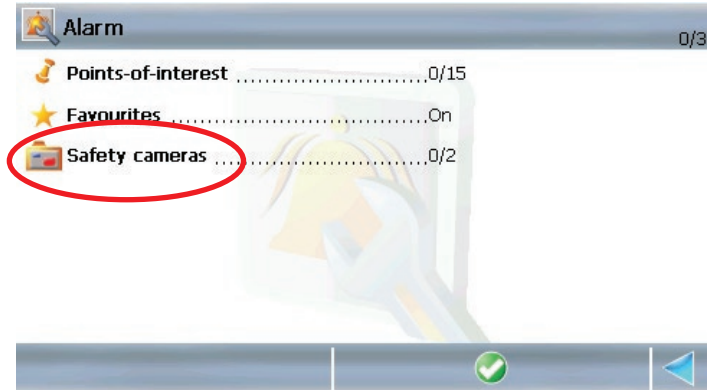
11. Select Settings



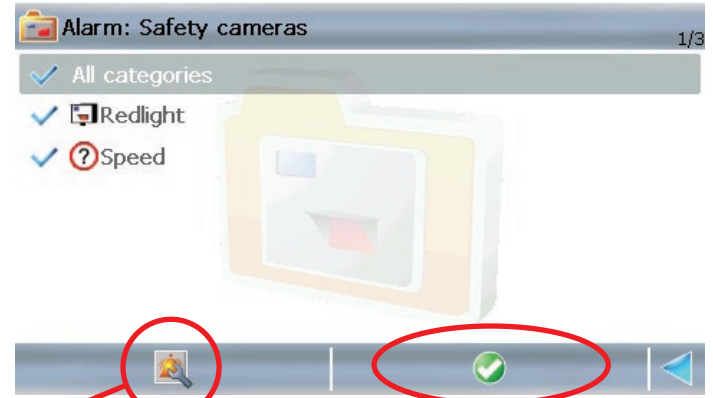
11. Select Alarm



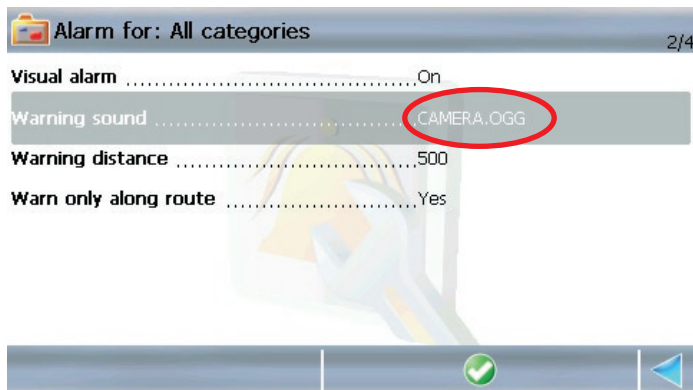
12. Select Safety cameras



13. Make sure to select the ticks and not the words to activate an option if done correctly the ticks will light up blue. Once you have selected the options you require press the green tick to finish and save your options. If you wish to setup an alarm sound for the cameras follow the next step instead of pressing the green tick.



14. If you want the camera to make an audible alarm, press the bell icon to access this menu illustrated below and change the Warning sound from "None" to a desired sound.



Note: If the bell icon is greyed out, you will have to deselect the ticks and repress the ticks to activate the icon again.